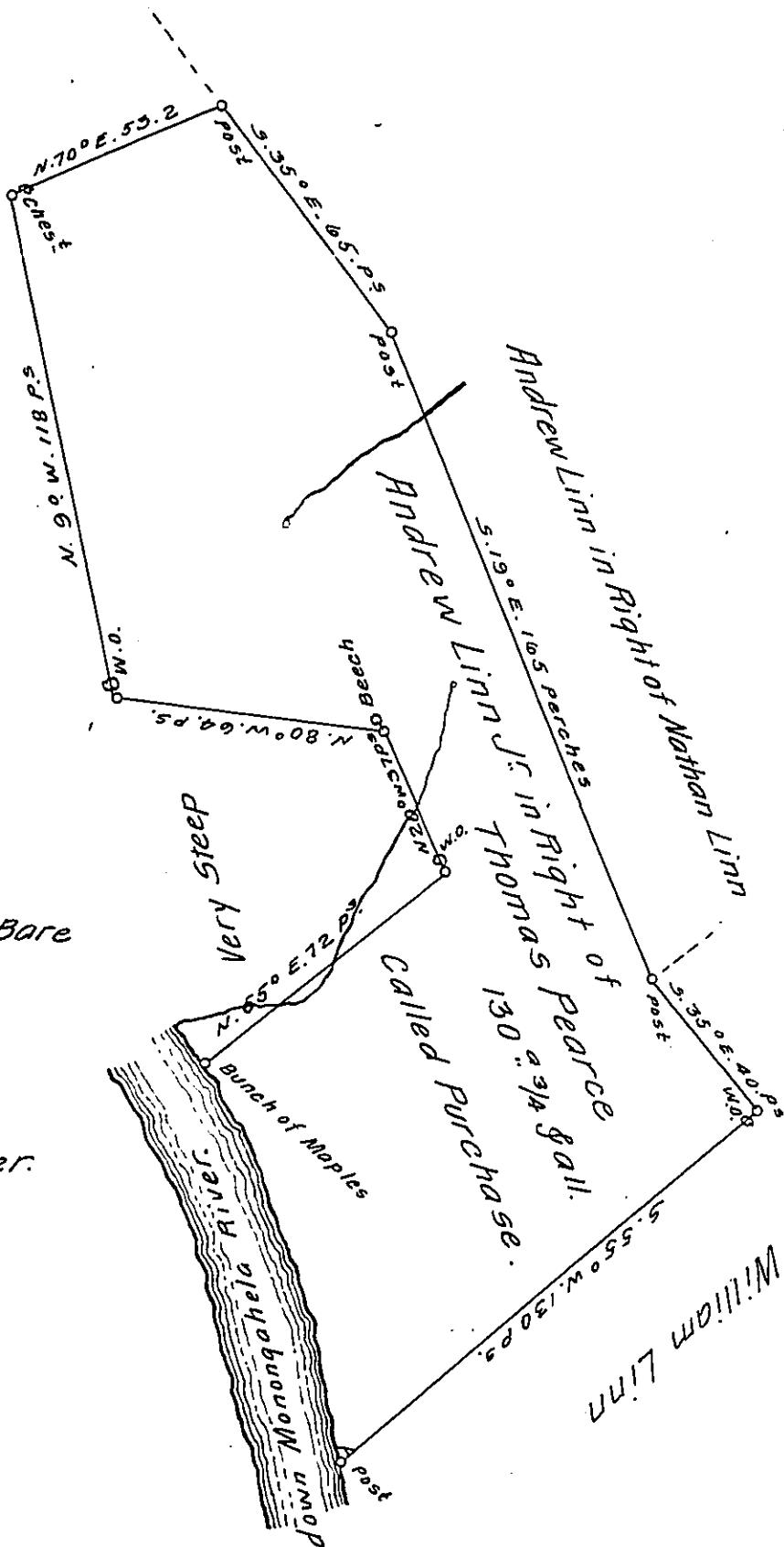


Bald Hill



The Courses from A to B are as follows.

- N. 8° W. 34. per.
  - N. 16° W. 16. per.
  - N. 18° W. 47. per.
- 97-

down Monongahela River.

Situated on the East Side of Monongahela River in the New purchase. Bedford County. and Survey'd the 26<sup>th</sup> day of Aug<sup>r</sup> 1769. By Order of Survey N<sup>o</sup> 1768 dated the 3<sup>d</sup> day of April 1769.

By Alan. Dep<sup>y</sup>. Sur.

To John Lukens Esq<sup>r</sup>  
Surveyor General.

IN TESTIMONY that the above is a copy of the original remaining on file in the Department of Internal Affairs of Pennsylvania, made conformably to an Act of Assembly approved the 16th day of February, 1833, I have hereunto set my Hand and caused the Seal of said Department to be affixed at Harrisburg, this twenty seventh day of March 1912.

*Henry Hoover*  
Secretary of Internal Affairs.